

# The *Vibrio cholerae* genome contains two unique circular chromosomes

MICHELE TRUCKSIS\*<sup>†‡</sup>, JANE MICHALSKI\*<sup>§</sup>, YING KANG DENG\*, AND JAMES B. KAPER\*<sup>§</sup>

\*Center for Vaccine Development, Division of Geographic Medicine, Department of Medicine and <sup>§</sup>Department of Microbiology and Immunology, University of Maryland School of Medicine, Baltimore, MD 21201; and <sup>†</sup> Medical Service, Veterans' Affairs Medical Center, Baltimore, MD 21201

Edited by Stanley Falkow, Stanford University, Stanford, CA, and approved September 11, 1998 (received for review June 15, 1998)

**ABSTRACT** *Vibrio cholerae*, the etiologic agent of the diarrheal disease cholera, is a Gram-negative bacterium that belongs to the  $\gamma$  subdivision of the family Proteobacteriaceae. The physical map of the genome has been reported, and the genome has been described as a single 3.2-Mb chromosome [Majumder, R., et al. (1996) *J. Bacteriol.* 178, 1105–1112]. By using pulsed-field gel electrophoresis of genomic DNA immobilized in agarose plugs and digested with the restriction enzymes I-CeuI, SfiI, and NotI, we have also constructed the physical map of *V. cholerae*. Our analysis estimates the size of the genome at 4.0 Mb, 25% larger than the physical map reported by others. Our most notable finding is, however, that the *V. cholerae* chromosome appears to be not the single chromosome reported but two unique and separate circular megareplicons.

A comprehensive *Vibrio cholerae* genetic map has been unattainable because of the relative paucity of efficient genetic exchange systems for this organism. Conjugation in *V. cholerae* is possible and is mediated by the P factor, but unlike the F factor of *Escherichia coli*, the P factor cannot integrate into the chromosome, and hence cannot induce Hfr donors. Although many genes have been mapped relative to one another, the distance within these gene clusters is small relative to the entire genome; thus, a physical map is needed to determine the positions of genes on the chromosome.

Pulsed-field gel electrophoresis (PFGE) has been used to assess genomic diversity, to identify the location of specific genes, to determine the size of the genome, to detect gross chromosome alterations, and to document the existence of multiple replicons in a bacterium. Previously, the existence of multiple chromosomes or permanent megareplicons in the family Proteobacteriaceae has been primarily limited to members of the  $\alpha$  subdivision [the exception being *Burkholderia cepacia* (1), a member of the  $\beta$  subdivision]. Members of the  $\alpha$  group demonstrated to have two-chromosome genomes include *Brucella melitensis* (2), *Rhodobacter sphaeroides* (3), *Agrobacterium tumefaciens* (4), and *Rhizobium meliloti* (5). We now report that *V. cholerae* contains not the single circular chromosome previously reported (6), but two chromosomes.

## MATERIALS AND METHODS

**Bacterial Strains.** *V. cholerae* 395, a classical Ogawa strain, and *V. cholerae* E7946, an El Tor Ogawa strain were from collections at the Center for Vaccine Development and have previously been demonstrated to produce cholera in volunteers (7). *V. cholerae* A11837, an O139 Bengal strain, was isolated from a Bangladeshi patient with severe cholera in early 1993 (a gift of M. J. Albert, International Centre for

Diarrheal Disease Research, Bangladesh) and also has been shown to produce cholera in volunteers (8). *V. cholerae* 392, a non-O1 environmental isolate, was from collections at the Center for Vaccine Development. *V. cholerae* S-21, a non-O1 clinical isolate and *Vibrio mimicus* strain 2031 were a gift of J. Powell, Division of Hospital Epidemiology, University of Maryland, Baltimore.

**Pulsed-Field Gel Electrophoresis.** Chromosomal DNA was prepared from the bacterial strains by using the technique of Trucksis et al. (9) with minor modification. The bacteria were grown in Luria-Bertani (LB) broth at 37°C to an optical density at 600 nm of 0.9. Cells were washed according to previously described protocols (9) and mixed with an equal volume of 2.0% inbed agarose (New England Biolabs) and cast in a mold. The individual agarose inserts were treated as previously described (9) except that lysozyme (5 mg/ml) was substituted for lysostaphin. After processing, the inserts were incubated for at least 6 hr with restriction enzyme I-CeuI or NotI at 37°C or with SfiI at 50°C. Electrophoresis was performed with either a CHEF-DR II or III system (Bio-Rad) in 0.5× TBE buffer (45 mM Tris/45 mM boric acid/1 mM EDTA, pH 8.3) at 4–10°C. Different electrophoresis conditions used were based on the size of the DNA fragments to be resolved. Electrophoresis parameters are given in each figure legend. After electrophoresis, gels were stained with ethidium bromide. The molecular weights of restriction fragments were determined by comparison with  $\lambda$  DNA concatamers, *Saccharomyces cerevisiae* chromosome, and low-range pulsed-field gel markers (New England Biolabs) as molecular weight markers.

**Southern Blotting.** Southern blots of restriction endonuclease-digested DNAs were transferred to Magnagraph nylon membrane (Micron Separations, Westboro, MA). The genes were mapped by using either restriction fragments isolated from plasmids containing the cloned genes or with oligonucleotide probes derived from published gene sequences (Table 1). DNA fragment probes were labeled with [ $\alpha$ -<sup>32</sup>P]dCTP by using the random-primed DNA labeling kit (Amersham) according to the instructions of the manufacturer. Hybridizations were performed at 37°C in 25% formamide buffer. The following oligonucleotide gene probes were used: *pcd4*, 5'-ACTGAAGGCTCATCA-CAGGCATG-3'; *ompW*, 5'-TTGCCTAGCCGTAAGTGCAG-CCCTA-3'; *mutL*, 5'-ATGACTGCGACCGAGAAGATAGAG-3'; *ompV*, 5'-TCTAGGCACTTATCTGACTGGCAGC-3'; and *hlyT*, 5'-GCTATCTATCACAGTGATGCCGTGT-3'. The oligonucleotides were radiolabeled with [ $\gamma$ -<sup>32</sup>P]dATP by using a 5' end labeling protocol (10). The *rpoS* gene probe was a 600-bp fragment amplified from *E. coli* strain NM522 (11) genomic DNA using primers T1 (5'-GCGCGTCGCGCACTGCGTGG-3') and T2 (5'-CTGGCCAGCACTTCACGCTG-3') derived from the published *E. coli* DNA sequence (12). PCR with *Taq* polymerase

The publication costs of this article were defrayed in part by page charge payment. This article must therefore be hereby marked "advertisement" in accordance with 18 U.S.C. §1734 solely to indicate this fact.

© 1998 by The National Academy of Sciences 0027-8424/98/9514464-6\$2.00/0  
PNAS is available online at www.pnas.org.

This paper was submitted directly (Track II) to the *Proceedings* office. Abbreviation: PFGE, pulsed-field gel electrophoresis.

<sup>‡</sup>To whom reprint requests should be addressed at: Center for Vaccine Development, University of Maryland School of Medicine, 685 West Baltimore Street, Baltimore, MD 21201. e-mail: mtrucks@umppa1.ab.umd.edu.

Table 1. Gene probes used for *V. cholerae* gene mapping

Gene	Map location	Function	Source (ref.)
<i>ctxA</i> <sup>†</sup>	I-1/2, S-B/T	Cholera toxin A subunit	J. B. Kaper (22)
<i>dam</i>	I-4, S-I	DNA adenine methylase	J. Das (23)
<i>epsE</i>	I-4, S-A	Extracellular secretion protein	M. Sandkvist (24)
<i>exbB</i> <sup>†</sup>	I-2, S-J	High affinity iron transport system	S. M. Payne (25)
<i>dnaE</i>	I-1, S-S	Alpha subunit of DNA polymerase III	A. Franco (26)
<i>fur</i> <sup>†</sup>	I-2, S-C	Ferrichrome uptake, regulation of iron uptake	S. B. Calderwood (27)
<i>hap</i> <sup>†</sup>	I-2, S-J	Hemagglutinin protease	C. C. Hase (28)
<i>hlyA</i> <sup>†</sup>	I-2, S-E	Hemolysin	J. B. Kaper (29)
<i>hlyT</i>	I-3, S-D	Hemolysin	Oligonucleotide (30)
<i>hutA</i>	I-1, S-D	Heme transport receptor	S. M. Payne (25)
<i>irgB</i>	I-3, S-P	Iron-regulated virulence protein	S. B. Calderwood (31)
<i>malEFG</i> <sup>†</sup>	I-2, S-J	Maltose transport	H. Lang (32)
<i>malQ</i> <sup>†</sup>	I-2, S-M	Maltose metabolism	H. Lang (32)
<i>mshA</i>	I-3, S-V	Mannose-sensitive hemagglutinin pilin	R. K. Taylor (33)
<i>mutL</i>	I-6, S-A	DNA repair	Oligonucleotide (34)
<i>nanH</i>	I-1, S-H	Neuraminidase	J. B. Kaper (35)
<i>ompS</i> <sup>†</sup>	I-2, S-M	Growth-phase-dependent maltoporin	H. Lang (36)
<i>ompT</i>	I-1, S-H	Outer membrane protein	J. B. Kaper (unpublished data)
<i>ompU</i>	I-3, S-D	Outer membrane protein	J. B. Kaper (37)
<i>ompV</i>	I-1, S-K	Outer membrane protein	Oligonucleotide (38)
<i>ompW</i> <sup>†</sup>	I-2, S-J	Outer membrane protein	Oligonucleotide (39)
<i>pcd4</i> <sup>†</sup>	I-2, S-M	Confers resistance to bacteriophage	Oligonucleotide (40)
<i>recA</i>	I-3, S-P	Homologous recombination	J. B. Kaper (41)
<i>rfaD</i>	I-5, S-A	Core oligosaccharide biosynthesis	J. B. Kaper (42)
<i>rpoS</i>	I-3, S-P	Alternate sigma factor	M. Trucksis, <i>E. coli</i> probe (43)
<i>tagA</i>	I-1, S-B	Lipoprotein	D. K. Karaolis (44)
<i>tcpA</i>	I-1, S-B	Toxin-coregulated pilus	R. K. Taylor (45)
<i>tcpG/</i> <i>dsbA</i>	I-7, S-A	Periplasmic thiol:disulfide interchange protein	R. K. Taylor (46)
<i>toxR</i>	I-1, S-R	Transcription-activating transmembrane DNA-binding protein	J. B. Kaper (47)
<i>vibA</i>	I-1, S-B	Vibriobactin siderophore synthesis	S. M. Payne (48)
<i>viuA</i>	I-1, S-S	Vibriobactin receptor	S. B. Calderwood (49)

There are two copies of CTX $\phi$  in the genome. I, I-CeuI band; S, *SfiI* fragment.

<sup>†</sup>Genes located on replicon II.

(2 units) was performed in 50  $\mu$ l containing chromosomal DNA template (50 ng), primers (2  $\mu$ M each), dNTPs (200  $\mu$ M), MgCl<sub>2</sub> (2 mM), (NH<sub>4</sub>)<sub>2</sub>SO<sub>4</sub> (17 mM), dimethyl sulfoxide (5  $\mu$ l), and 2-mercaptoethanol (0.07%). The amplification cycle was denaturation at 94°C for 1 min, annealing at 50°C for 2 min, and extension at 72°C for 2 min. The amplification cycle was repeated 29 times and followed by final extension at 72°C for 10 min.

**Isolation of *SfiI* or I-CeuI Linking Fragments.** To isolate *SfiI*-linking fragments of *V. cholerae* genomic DNA, a comparison was made of the PFGE pattern of *V. cholerae* 395 genomic DNA digested with *NotI* alone or *NotI* plus *SfiI*. *NotI* fragments that disappeared in the double-digestion products identified those *NotI* fragments having *SfiI* site(s). The *NotI* fragments identified as containing *SfiI* sites were excised from agarose gels, digested to completion with *HindIII* (which cuts *V. cholerae* DNA frequently), and labeled with [ $\alpha$ -<sup>32</sup>P]dCTP as above. These linking probes were then used in Southern hybridizations of *SfiI*-digested *V. cholerae* 395 genomic DNA. In a similar manner, a comparison was made of the PFGE pattern of *V. cholerae* 395 genomic DNA digested with *SfiI* alone or I-CeuI plus *SfiI*. *SfiI* fragments that disappeared in the double-digestion products identified those *SfiI* fragments having I-CeuI site(s). These I-CeuI linking fragments were used in a Southern hybridization as was done for the *SfiI* linking fragments.

## RESULTS

**Genome Size.** The size of the *V. cholerae* 395 genome was estimated by compilation of the fragment sizes resulting from

*SfiI* restriction enzyme digestion (Table 2). Several bands resulting from *SfiI* digestion had an increased staining intensity relative to other bands. These were determined to be doublets after they were excised from the gel and digested with a second restriction enzyme, *NotI*; the summation of the resulting fragments was found to be twice that of the original-sized *SfiI* fragment. The *SfiI* digestion yielded 33 fragments from 364 to 4 kb in size, which were designated A thru GG (Fig. 1). The sum of the fragments yielded a genome size estimated to be 3,988 kb. The I-CeuI-digested genomic DNA produced 10 fragments discernible following ethidium bromide staining of PFGE (Fig. 2). The fragments ranged in size from 1,579 to 5 kb, and were designated 1 to 10.

**The *V. cholerae* Genome Contains Two Replicons.** An interesting observation was noted when intact *V. cholerae* DNA was electrophoresed. For this experiment, total undigested genomic DNA was electrophoresed side-by-side with I-CeuI-digested genomic DNA (Fig. 3). The undigested genomic DNA appeared as two megabase-sized fragments. The top fragment (replicon I) appeared as a diffuse smear on the gel, suggesting that it was chromosomal DNA, and the lower fragment (replicon II) appeared as a more distinct band. The I-CeuI-digested genomic DNA appeared as 10 bands. Band 2 in the I-CeuI digestion appeared the same as the smaller band in the undigested DNA (Fig. 3). In our preparations of I-CeuI-digested DNA, band 2 always appeared to stain with less intensity than the other bands, suggesting a difference in ethidium bromide uptake that would occur if band 2 was

Table 2. Sizes of the *Sfi*I(fragment)- and I-*Ceu*I(band)-generated restriction fragments from classical *V. cholerae* 395

Fragment	Size, kb	Band	Size, kb
A	364	1	1378
B	302	2	1579
C	287	3	330
D	287	4	256
E	259	5	173
F	210	6	119
G	198	7	75
H	189	8	67
I	187	9	6
J	172	10	5
K	150		
L	150		
M	143		
N	138		
O	113		
P	113		
Q	104		
R	84		
S	75		
T	71		
U	71		
V	65		
W	58		
X	46		
Y	40		
Z	31		
AA	22		
BB	21		
CC	12		
DD	9		
EE	8		
FF	5		
GG	4		
Total	3988		

The sizes of bands one and two were determined by summation of their *Sfi*I fragments. The mobility of band 2 in the I-*Ceu*I digestion is aberrant relative to the other fragments because of the covalently closed circular nature of this species.

covalently closed circular rather than linear DNA (Fig. 2A). When total genomic DNA was subjected to I-*Sce*I digestion, the result was two bands (data not shown). The migration of the smaller band was the same as band 2 of the I-*Ceu*I-digested DNA and the smaller band in the undigested DNA. These results are consistent with the second band in all three preparations representing a circular replicon that is uncut by I-*Ceu*I or I-*Sce*I.

PFGE of undigested genomic DNA prepared from other strains of *V. cholerae*, an El Tor biotype strain E7946 (data not shown), a prototypic O139 serotype strain AI1837 (Fig. 3), and non-O1 strains 392 and S-21 (data not shown) also revealed two bands migrating about the same distance as the two replicons of the *V. cholerae* classical biotype strain 395 (Fig. 3). Examination of *V. mimicus* confirmed the presence of two bands following PFGE of undigested genomic DNA. Thus, these members of the genus *Vibrio*, and most likely all *Vibrio* species, have two unique replicons.

**The Circular Map of the 2.4-Mb and 1.6-Mb Replicons.** To order the *Sfi*I fragments within the two largest bands separated in the I-*Ceu*I digest, bands 1 and 2 were excised from the agarose gel and digested with a second restriction enzyme, *Sfi*I. The digests were electrophoresed in parallel and with an *Sfi*I digest of total genomic DNA. I-*Ceu*I band 1 yielded 13 discernible *Sfi*I fragments, of which 11 corresponded to fragments present in the total genomic DNA *Sfi*I digest and two were new bands not present in the total genomic DNA *Sfi*I

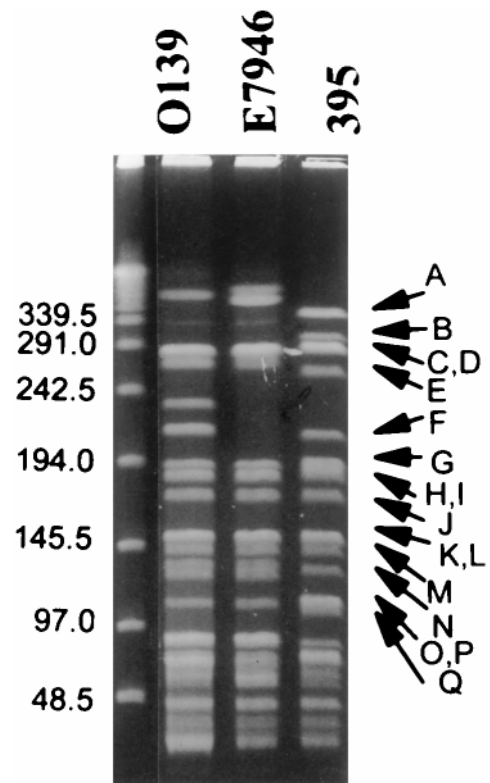


Fig. 1. PFGE of *Sfi*I-digested *V. cholerae* DNA.  $\lambda$  concatamers (lane 1), O139 *V. cholerae* strain AI1837 (lane 2), El Tor *V. cholerae* strain E7946 (lane 3), and classical *V. cholerae* strain 395 (lane 4). The *V. cholerae* strain 395 fragments are identified to the right of lane 4. Pulse ramps were 13 to 28 sec for 60 hr at 180 V in 1.8% agarose.

digest and therefore represent I-*Ceu*I-*Sfi*I fragments. These two bands represent part of the *Sfi*I fragments (L and D) present at the ends of the large I-*Ceu*I fragment. The intact *Sfi*I bands contained in band 1 of the I-*Ceu*I digest were B, H, K, O, R, S, W, X, Z, AA, and CC.

I-*Ceu*I band 2 excised from the agarose gel and digested with *Sfi*I produced 10 discernible fragments, all of which corresponded to fragments present in the total genomic DNA *Sfi*I digest. These corresponded to *Sfi*I bands C, E, F, G, J, M, N, T, U, and BB. The summation of the *Sfi*I fragments gave a size of 1579 kb for the second replicon. The linkage map of these *Sfi*I bands was established by using *Not*I fragments encoding an *Sfi*I site(s). Linkage confirmed the unique and separate circular nature of the second replicon.

A comparison was made of the PFGE pattern of *V. cholerae* 395 genomic DNA digested with *Sfi*I or I-*Ceu*I and *Sfi*I. *Sfi*I fragments that disappeared in the double-digestion identified those *Sfi*I fragments having I-*Ceu*I site(s). These became I-*Ceu*I linking fragments and were used as probes in a Southern hybridization of I-*Ceu*I-digested genomic DNA. Each probe (an *Sfi*I fragment containing an I-*Ceu*I site) hybridized with two of the I-*Ceu*I genomic DNA fragments except for *Sfi*I fragment A, which hybridized with I-*Ceu*I bands 4, 5, 6, 7, and 9 (data not shown). The order of these I-*Ceu*I bands was determined by using *Not*I linking fragments (see below) and the hybridization signals of specific gene probes (Table 1). None of the I-*Ceu*I linking fragments hybridized with I-*Ceu*I band 2. The analysis of this data allowed the determination of two circular maps of all 10 I-*Ceu*I bands (Fig. 4). The exact position of the smallest I-*Ceu*I band (band 10) could not be determined. This band may represent the recently described cryptic plasmid linked to the CTX prophage (13) and thus may be extrachromosomal.



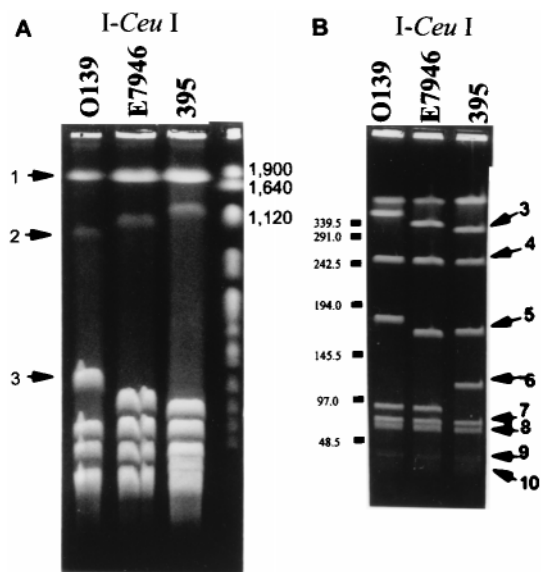


FIG. 2. PFGE of *I-CeuI*-digested *V. cholerae* DNA. Digested fragments were separated in different agarose concentrations to permit separation of both large and small fragments. (A) O139 *V. cholerae* strain AI1837 (lane 1), El Tor *V. cholerae* strain E7946 (lane 2), classical *V. cholerae* strain 395 (lane 3), and yeast-chromosome pulsed-field gel marker (lane 4). The first three bands are identified to the left of lane 1. Pulse ramps were 60 to 90 sec for 24 hr at 200 V in 1.0% agarose. Band 2 is circular, and so the molecular weight cannot be determined by comparison with linear molecular-weight markers. (B) O139 *V. cholerae* strain AI1837 (lane 1), El Tor *V. cholerae* strain E7946 (lane 2), and classical *V. cholerae* strain 395 (lane 3). Identification of the migration of  $\lambda$  concatamers is shown to the left of lane 1. Fragments 3 to 10 are identified on the right of lane 3. Pulse ramps were 13 to 28 sec for 60 hr at 180 V in 1.8% agarose.

To construct the *SfiI* linkage map, a comparison was made of the PFGE pattern of *V. cholerae* 395 genomic DNA digested with *NotI* alone or *SfiI* plus *NotI*. *NotI* fragments that contained *SfiI* site(s) were used as probes in a Southern hybridization of *SfiI*-digested genomic DNA.

**Positioning of *V. cholerae* Genes on the Physical Map.** The relative chromosomal locations of 44 genes (including 9 *rrn* operons) were determined on the physical map of *V. cholerae* 395 genome by hybridization using homologous or heterologous genes or synthetic oligonucleotides as probes (Table 1). The genes were positioned arbitrarily on fragments to which they hybridized and do not reflect the true order of genes within each chromosomal fragment. The *I-CeuI* sites were taken as the positions of the *rrn* operons.

A copy of the *V. cholerae* CTX  $\phi$  element (14) encoding *cep*, *orfU*, *ace*, *zot*, and *ctxAB* was found on each of the replicons. This placement is consistent with previous reports that the two copies of *ctxAB* are widely separated in the classical biotypes of *V. cholerae* (15). The *toxR* virulence gene regulator and the *V. cholerae* pathogenicity island (16) containing the *tcp* operon, as well as all of the *rrn* operons, were located on the larger replicon.

## DISCUSSION

Our suspicion that the *V. cholerae* chromosome may exist as two separate replicons was based on the observation that when undigested genomic DNA was subjected to electrophoresis, two megabase-sized fragments were visible. In addition, we were unable to convincingly link the *I-CeuI* fragments into a single circular chromosome. The final clue came from the observation that immobilized genomic DNA subjected to pulsed-field gel electrophoresis after digestion with another rarely cutting restriction enzyme, *I-SceI*, produced two frag-

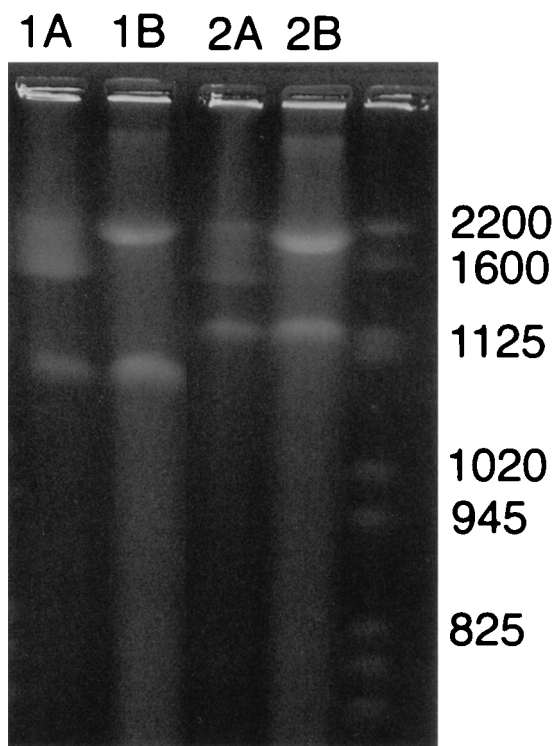


FIG. 3. PFGE of undigested versus *I-CeuI*-digested *V. cholerae* DNA. O139 *V. cholerae* strain AI1837 (lane 1) and classical *V. cholerae* strain 395 (lane 2). Lanes marked *A* are undigested and lanes marked *B* are *I-CeuI*-digested genomic DNA. Yeast-chromosome molecular-weight markers are in the far right lane. Pulse ramps were 60 to 90 sec for 60 hr at 200 V in 1.3% agarose.

ments, the smaller of which appeared exactly like one of two megabase-sized fragments produced by *I-CeuI* digestion. This fragment in both digestions always appeared to stain lighter than the other bands. We now have confirmed (by linkage of *SfiI* fragments contained in this band) that this fragment was not cut by either *I-SceI* or *I-CeuI*; the presumed reason it did not stain well was because it was constrained in its uptake of ethidium bromide by its covalently closed circular nature, i.e., it was a separate circular megareplicon.

This study demonstrates multiple replicons in *V. cholerae*, an enteric bacterial pathogen with a complex genomic structure. Proteobacteriaceae consists of four subdivisions,  $\delta/\epsilon$ ,  $\alpha$ ,  $\gamma$ , and  $\beta$  in the Woese classification based on 16S rRNA sequences (17). Previously, bacteria in the Proteobacteriaceae shown to have a multiple-replicon genome (except for *Burkholderia cepacia*) were all members of the  $\alpha$  group, which also contains bacteria that have a single chromosome. Similarly, the  $\gamma$  subdivision, which includes the genus *Vibrio*, contains bacteria that also have a single chromosome, such as *Pseudomonas aeruginosa* and *E. coli*. Thus, there appears to be heterogeneity in genomic structure within the subdivisions. Other members of the  $\gamma$  subdivision should be examined to determine whether the genus *Vibrio* is an exception or whether this complex genomic structure is more prevalent.

An important question is whether the two replicons of *V. cholerae* represent two chromosomes. The definition of a chromosome versus a megaplasmid is the subject of some debate (18, 19). Most investigators suggest that the presence of essential or housekeeping genes defines a chromosome. These could include 16S rRNA genes, metabolically essential genes (such as those encoding proteins involved in metabolism of amino acids), or heat-shock proteins (such as *groE* or *dnaK*). Other properties suggested as necessary to define a chromosome include a size representing some significant percentage of the total genome, non-self-transmissibility, or the observa-



29. Goldberg, S. L. & Murphy, J. R. (1984) *J. Bacteriol.* **160**, 239–244.
30. Williams, S. G., Attridge, S. R. & Manning, P. A. (1993) *Mol. Microbiol.* **9**, 751–760.
31. Goldberg, M. B., Boyko, S. A. & Calderwood, S. B. (1991) *Proc. Natl. Acad. Sci. USA* **88**, 1125–1129.
32. Lang, H., Jonson, G., Holmgren, J. & Palva, E. T. (1994) *Infect. Immun.* **62**, 4781–4788.
33. Marsh, J. W., Marsh, W., Sun, D. X. & Taylor, R. K. (1996) *Infect. Immun.* **64**, 460–465.
34. Bera, T. K., Ghosh, S. K. & Das, J. (1989) *Nucleic Acids Res.* **17**, 6241–6251.
35. Galen, J. E., Vimr, E. R., Lawrisuk, L. & Kaper, J. B. (1990) in *Cloning, Sequencing, and Expression of the Gene, nanH, for Vibrio cholerae Neuraminidase*, eds. Sack, R. B. & Zinnaka, Y. (KTK Scientific Publishers, Tokyo), pp. 143–153.
36. Lang, H. & Palva, E. T. (1993) *Mol. Microbiol.* **10**, 891–901.
37. Sperandio, V., Girón, J. A., Silveira, W. D. & Kaper, J. B. (1995) *Infect. Immun.* **63**, 4433–4438.
38. Pohlner, J., Meyer, T. F., Jalajakumari, M. B. & Manning, P. A. (1986) *Mol. Gen. Genet.* **205**, 494–500.
39. Jalajakumari, M. B. & Manning, P. A. (1990) *Nucleic Acids Res.* **18**, 2180.
40. Biswas, S. K., Chowdhury, R. & Das, J. (1992) *J. Bacteriol.* **174**, 6221–6229.
41. Goldberg, I. & Mekalanos, J. J. (1986) *J. Bacteriol.* **165**, 715–722.
42. Comstock, L. E., Maneval, D., Panigrahi, P., Joseph, A., Levine, M. M., Kaper, J. B., Morris, J. G. & Johnson, J. A. (1995) *Infect. Immun.* **63**, 317–323.
43. Hiratsu, K., Yamamoto, K. & Makino, K. (1997) *Genes Genet. Syst.* **72**, 115–118.
44. Harkey, C. W., Everiss, K. D. & Peterson, K. M. (1995) *Gene* **153**, 81–84.
45. Rhine, J. A. & Taylor, R. K. (1994) *Mol. Microbiol.* **13**, 1013–1020.
46. Peek, J. A. & Taylor, R. K. (1992) *Proc. Natl. Acad. Sci. USA* **89**, 6210–6214.
47. Miller, V. L. & Mekalanos, J. J. (1984) *Proc. Natl. Acad. Sci. USA* **81**, 3471–3475.
48. Wyckoff, E. E., Stoebner, J. A., Reed, K. E. & Payne, S. M. (1997) *J. Bacteriol.* **179**, 7055–7062.
49. Butterson, J. R., Stoebner, J. A., Payne, S. M. & Calderwood, S. B. (1992) *J. Bacteriol.* **174**, 3729–3738.